



Air conditioners

# Heating & Cooling

Wall mounted unit

- » SEER and SCOP up to **A<sup>+</sup>**
- » Low energy consumption
- » Discreet, modern design
- » Whisper quiet in operation
- » The right indoor for the right room



[www.daikin.eu](http://www.daikin.eu)



FTXS20-25K/CTXS15-35K



FTXS35-42-50K



FTXS60-71G

# Europe's energy label: raising the bar on energy efficiency

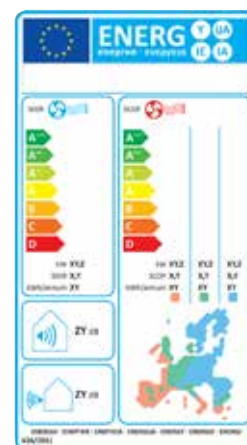
To realise its challenging 20-20-20 environmental goals (20% reduction in CO<sub>2</sub> emissions, 20% share of renewable energy and a 20% reduction in the use of primary energy), Europe is imposing minimum efficiency requirements for energy related projects. These minimum requirements came into effect on 1 January 2013, and were revised. New, higher targets will be set in 2014.

Not only does the Eco-Design Directive systematically raise the minimum requirements with respect to environmental performance, the method used to measure this performance has also been changed to better reflect real-life conditions. The seasonal performance rating provides a much more accurate picture of actual expected energy efficiency over an entire heating or cooling season.

Completing the picture is an energy label for EU which allows consumers to compare and make purchasing decisions based on uniform labelling criteria. The label includes multiple classifications from A+++ to D reflected in colour shadings ranging from dark green (most energy efficient) to red (least efficient). Information on the label includes not only the new seasonal efficiency ratings for heating (SCOP) and cooling (SEER), but also annual energy consumption and sound levels. It will allow end-users to make even better informed choices, since seasonal efficiency reflects air conditioner or heat pump efficiency over an entire season.



**SEASONAL EFFICIENCY**  
Smart use of energy



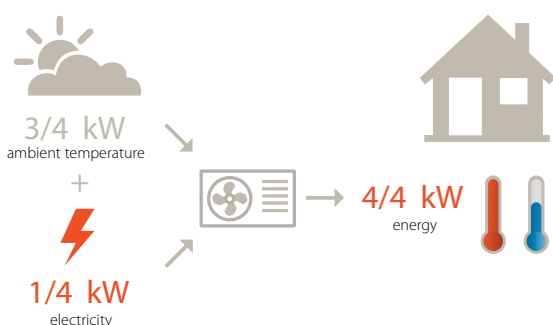
# The ideal solution

Our wall-mounted units use the latest in heat-pump technology combined with advanced engineering and design to make them ideal for all rooms in the house. Blending easily with the interior décor and operating extremely quietly, these units provide optimal climate control throughout the year making them ideal for rooms that are being refurbished and in well-insulated houses.

Designed to meet the exacting requirements of the modern home as well as to deliver a performance that far exceeds that demanded by the seasonal efficiency rules, these wall-mounted heat pump units with their inverter technology also deliver a reduced carbon footprint together with reduced heating and cooling costs.



## Combining highest efficiency and year-round comfort with a heat pump system



### Did you know that ...

Air-to-air heat pumps obtain 75% of their output energy from a renewable source: the ambient air, which is both renewable and inexhaustible. Of course, heat pumps also require electricity to run the system, but increasingly this electricity can also be generated from renewable energy sources (solar energy, wind energy, hydropower, biomass). A heat pump's efficiency is measured in SCOP (Seasonal Coefficient Of Performance) for heating and SEER (Seasonal Energy Efficiency Ratio) for cooling.

# Optimal design and comfort for the whole home

## Integrated design

- › Discreet, modern design. Its smooth curve blends beautifully with the wall resulting in an unobtrusive presence that matches all interior décors.
- › High quality matt crystal white finish.
- › New remote controller design, in the same high quality matt white finish to create a perfect match with the indoor unit.

## Top performance **A++**

The FTXS-K series delivers top performance with seasonal energy efficiency ratings up to A++ and they are equipped with a weekly timer and intelligent eye to generate further energy savings. The weekly timer allows you to programme your unit so that it best suits your needs, whereas the intelligent eye detects the presence of people in the room and activates the economy mode when no one is there.



## The right indoor for the right room

We have a full range of wall units to provide optimal design and comfort in any room in your home.

Our small wall mounted units (CTXS15,35K and FTXS20,25K) are optimised for the modern bedroom.

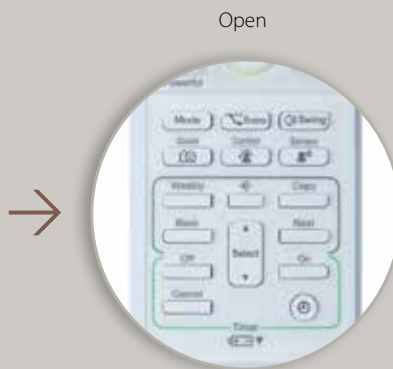
- › Recognising the trend for less spacious bedrooms and better insulation, we extended our range with the 15 class to deliver exactly the right comfort in smaller rooms.
- › In general, silence is even more important in bedrooms than in living areas: our small wall mounted series go almost unnoticed with operating sound levels as low as 19dBA.

Our larger wall mounted units (FTXS35, 42, 50K) deliver perfect comfort to your living area.

- › The new discharge air pattern - using the 'Coanda effect' - provides a greater airflow length ensuring perfect comfort in every corner of your living room.
- › The two-area intelligent eye detects where people are located in the room and can project the airflow away from the occupants to avoid direct draught.
- › To optimize your comfort even further the new wall mounted series are whisper quiet.



Infrared remote control (Standard)  
ARC466A6



## ► Ultra-efficient home heating comfort



When selecting the energy saving function **ECONO mode** the power consumption decreases so that other appliances that need large power consumption can be used.



No air current any more, as the air flow is directed away from the occupant. If the **2-area intelligent eye** detects people in the room, the air flow is directed to a zone other than where the persons are located at that moment. If no people are detected, the unit switches to its energy-efficient setting (FTXS35,42,50K).

The **1-area intelligent eye** detects whether someone is in the room. If the room is empty, the unit switches to economy mode after 20 minutes, and restarts when someone enters the room (CTXS15,35K and FTXS20,25K).



**Energy saving during operation standby:** current consumption is reduced by about 80% when operating on standby (Classes 20, 25, 35, 42).



**Night set mode:** ensuring a good night sleep and saving energy, by preventing overheating or overcooling during night time.



The **comfort mode** guarantees draught-free operation in heating mode, the warm air is directed at the floor. In cooling mode, the cold air is directed to the ceiling.



**3D air distribution:** combination of vertical and horizontal auto-swing to circulate the air evenly in even large rooms or in corners (35,42,50,60,71 class).

## ► Built-in intelligence

The infrared remote control is user-friendly and equipped with **energy saving functions** such as a **weekly timer**. The timer allows you to programme a 7-day schedule with 4 different actions per day.



Rapidly heat up or cool down the room in 20 minutes with **powerful operation**. After this period, the unit returns to its original setting.



**Whisper quiet operation:** the sound of the indoor units is that low that it can hardly be heard: FTXS/CTXS-K series go down to only **19dBA!**



By pushing the **indoor unit silent operation**, the indoor units will lower their noise emissions by another 3dBA!



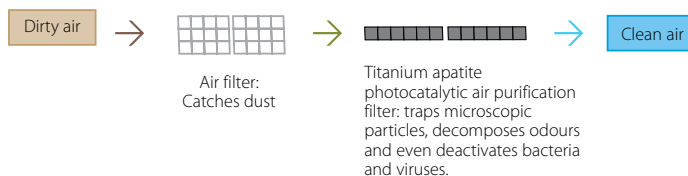
To ensure a quiet environment of the neighbourhood, the operation sound of the outdoor unit can be lowered by 3dBA.




Always in control, no matter where you are. Possibility to control your indoor unit from **any location** via app or internet. (FTXS35,42,50,60,71)

## ► A source of pure air

Dust and odours are trapped by the **titanium apatite photocatalytic air purification filter** but also bacteria and viruses are decomposed in order to provide you cleaner air.



# Heating & Cooling

INDOOR UNIT				CTXS15K	CTXS35K	FTXS20K	FTXS25K	FTXS35K	FTXS42K	FTXS50K	FTXS60G	FTXS71G	
Cooling capacity	Min./Nom./Max.		kW	Only available in multi model application		1.3/2.00/2.8	-/2.5/-	1.4/3.5/4.0	-/4.2/-	1.7/5.00/5.3	1.7/6.0/6.7	-/7.1/-	
Heating capacity	Min./Nom./Max.		kW			1.3/2.5/4.3	-/2.8/-	1.4/4.00/5.2	-/5.4/-	1.7/5.80/6.5	1.7/7.0/8.0	-/8.2/-	
Power input	Cooling	Min./Nom./Max.	kW			0.32/0.43/0.76	-/0.57/-	0.35/0.86/1.19	-/1.18/-	0.35/1.41/1.81	0.44/1.99/2.40	-/2.35/-	
	Heating	Min./Nom./Max.	kW			0.31/0.53/1.12	-/0.60/-	0.34/0.84/1.46	-/1.31/-	0.30/1.45/2.00	0.40/2.04/2.81	-/2.55/-	
<div></div> Seasonal efficiency (according to EN14825)	Cooling	Energy label			A++		A++		A				
		Pdesign	kW		2.00	2.50	3.50	4.20	5.00	6.00	7.10		
		SEER			7.40	7.90	7.47	6.80		5.58		5.28	
		Annual energy consumption	kWh		95	111	164	216	257	376	471		
	Heating (Average climate)	Energy label			A++		A+		A				
		Pdesign	kW		2.30	2.50	3.60	4.00	4.60	4.80	6.20		
		SCOP			4.77	4.93	4.85	4.20		3.89		3.81	
		Annual energy consumption	kWh		675	710	1,039	1,334	1,535	1,728	2,276		
Nominal efficiency (cooling at 35°/27° nominal load, heating at 7°/20° nominal load)	EER				4.65	4.39	4.07	3.56	3.55	3.02			
	COP				4.72	4.67	4.76	4.12	4.00	3.43	3.22		
	Annual energy consumption	kWh	215		285	430	590	705	995	1,175			
	Energy label	Cooling/Heating			A/A				B/B		B/C		
Casing	Colour			White									
Dimensions	Unit	HeightxWidthxDepth	mm	289x780x215				298x900x215				290x1,050x250	
Weight	Unit	kg		8				11				12	
Fan - Air flow rate	Cooling	High/Nom./Low/Silent operation	m³/min	7.9/6.3/4.7/3.9	9.2/7.2/5.2/3.9	8.8/8.8/4.7/3.9	9.1/9.1/5.0/3.9	11.2/11.2/5.8/4.1	11.2/11.2/7.0/4.1	11.9/11.9/7.4/4.5	16.0/16.0/11.3/10.1	17.2/17.2/11.5/10.5	
	Heating	High/Nom./Low/Silent operation	m³/min	9.0/7.5/6.0/4.3	10.1/8.1/6.3/4.3	9.5/7.8/6.0/4.3	10.0/8.0/6.0/4.3	12.1/9.3/6.5/4.2	12.4/10.0/7.8/5.2	13.3/10.8/8.4/5.5	17.2/14.9/12.6/11.3	19.5/16.7/14.2/12.6	
Sound power level	Cooling		dBA	55	59	58		59		60		63	
	Heating		dBA	56		58		59		60		62	
Sound pressure level	Cooling	High/Nom./Low/Silent operation	dBA	37/31/25/21	42/35/28/21	40/32/24/19	41/33/25/19	45/37/29/19	45/39/33/21	46/40/34/23	45/41/36/33	46/42/37/34	
	Heating	High/Nom./Low/Silent operation	dBA	38/33/28/21	41/36/30/21	40/34/27/19	41/34/27/19	45/39/29/19	45/39/33/22	47/40/34/24	44/40/35/32	46/42/37/34	
Piping connections	Liquid	OD	mm	6.35									
	Gas	OD	mm	9.5				12.7				15.9	
	Drain	OD	mm	18				-	18	-	18		-
Power supply	Phase / Frequency / Voltage		Hz / V	1~ / 50 / 220-240									

OUTDOOR UNIT					CTXS15K	CTXS35K	RXS20L	RXS25L	RXS35L	RXS42L	RXS50L	RXS60L	RXS71F8							
Dimensions	Unit	HeightxWidthxDepth	mm		Only available in multi model application	550x765x285			735x825x300			770x900x320								
Weight	Unit	kg		34			39			47		48		71						
Fan - Air flow rate	Cooling	High/Nom./Low/Super low	m³/min			33.5/30.1			36.0/30.1			37.3/30.6			50.9/48.9		50.2/45.0		54.5/46.0	
	Heating	High/Nom./Low/Super low	m³/min			28.3/25.6			31.3/27.2			45.0/43.1			46.3/46			46.0/46.0		
Sound power level	Cooling	dBA		59			61			62			65							
	Heating	dBA		58			59			61			62			66				
Sound pressure level	Cooling	High/Silent operation	dBA			46/-/43			48/-/44			48/44/-			49/46/-			52/-/49		
	Heating	High/Silent operation	dBA			47/-/44			48/-/45			48/45/-			49/46/-			52/-/49		
Operation range	Cooling	Ambient	Min.-Max. °CDB			-10~46														
	Heating	Ambient	Min.-Max. °CWB			-15~18														
Refrigerant	Type/GWP	R-410A/1,975																		
Piping connections	Piping length	OU - IU	Max.	m		-			20			-			30					
	Level difference	IU - OU	Max.	m		-			15			-			20.0					
Power supply	Phase / Frequency / Voltage			Hz / V	1 ~ / 50 / 220-240															
Current - 50Hz	Maximum fuse amps (MFA)			A	10			20												

(1) EER/COP according to Eurovent 2012, for use outside EU only.



Indoor unit  
FTXS20,25K/CTXS15,35K



Infrared remote control  
ARC466A6



RXS20-42L

Daikin has a worldwide reputation based on 90 years' experience in the successful manufacture of high quality air conditioning equipment for residential, commercial and industrial use and 56 years as a leader in heat pump technology.

The present leaflet is drawn up by way of information only and does not constitute an offer binding upon Daikin Europe N.V. Daikin Europe N.V. has compiled the content of this leaflet to the best of its knowledge. No express or implied warranty is given for the completeness, accuracy, reliability or fitness for particular purpose of its content and the products and services presented therein. Specifications are subject to change without prior notice. Daikin Europe N.V. explicitly rejects any liability for any direct or indirect damage, in the broadest sense, arising from or related to the use and/or interpretation of this leaflet. All content is copyrighted by Daikin Europe N.V.



Daikin Europe N.V. participates in the Eurovent Certification programme for Liquid Chilling Packages (LCP), Fan coil units (FCU) and Air handling units (AHU). Check ongoing validity of certificate online: [www.eurovent-certification.com](http://www.eurovent-certification.com) or using: [www.certiflash.com](http://www.certiflash.com)



ECPEN14-005 - 005 - 01 / 14 - Copyright Daikin  
The present publication supersedes ECPEN14-005P.  
Printed on non-chlorinated paper. Prepared by La Movidia, Belgium.  
Resp. Ed.: Daikin Europe N.V., Zandvoordestraat 300, B-8400 Oostende

Daikin products are distributed by:

FSC

ECPEN14-005